

SPRING 2020

MARDEN PARISH COUNCIL

NEWSLETTER



COPYRIGHT MR NICK MOON

A LOOK AT THIS ISSUE:

CALL FOR SITES UPDATE - PAGE 2-3

A NEW YOUTH CLUB - PAGE 9



LESLEY MANNINGTON



We also enjoyed another successful Marden at Christmas on 7th December and thanks go to our staff for all the organisation which that event entailed.



PAGE 1

Keep an eye on our various communication avenues to stay up to date with current events in Marden. Besides the various noticeboards at the Memorial Hall, the Library and Chainhurst, we are hoping to reinstate the noticeboard near the Old Post Office. Our website is continually updated and we use Facebook for instant information and warnings. We get a nice fuzzy feeling when you 'Like' us!! And don't forget – all our meetings are open to the public to attend. Do come along and see if you might like to volunteer your time for the good of the Parish or perhaps stand as a candidate at the local elections on 7th May.

Finally, a very warm welcome to all new residents who have recently moved to the village. There is lots going on in the village and I hope that you will all be very happy here - please contact Ali and Rachel in the Parish Office if you want to find out more about what goes on in Marden.



PLANNING UPDATE

Maidstone Borough Council (MBC) Call for Sites

At the December Extra Ordinary Full Council meeting it was unanimously agreed that the three large sites put forward under the recent MBC Call for Sites exercise, known as numbers 226, 309 and 318, were unsuitable for development. Councillors recognised that many residents are opposed to any major extension to the village. The Parish Council is grateful for all the valuable feedback provided by residents. This has provided much useful information which has been the result of so much hard work.

The Parish Council (MPC) has now submitted the formal response to MBC with regard to the three large-scale sites – Land North of Staplehurst, Strategic Expansion of Marden and Pagehurst Farm. In addition, the response included all the comments received from residents.

A thank you to all who participated in this very important exercise. It was vital that a robust and well-informed response was submitted to MBC. All three sites are deemed to be unsuitable for development owing to the many site constraints. The response can be viewed via the Parish Council website via:
<http://bit.ly/MPCCallForSites>

The formal response is broken down into principle of development, physical and social connectivity, highway considerations, character and setting, fluvial and surface water flooding, ecological considerations, education and health, employment and retail and leisure. The specific site constraints which were identified demonstrates the range of challenges that each of the large-scale sites cannot plausibly overcome in order to meet the tests of 'sustainable development' in accordance with the National Planning Policy Framework (NPPF) and compliance with the relevant Local Plan policies. MPC is also firmly of the opinion that the identified problems at all three sites are such that deliverability is uncertain and therefore their inclusion as allocated sites in the updated Maidstone Local Plan is inappropriate as the risk of non-deliverability is too great.

MPC will soon be responding on the remaining 19 smaller sites put forward under the MBC Call for Sites. All residents' comments continue to be welcome and any comments received before the end of February will be used to respond to MBC. Any comments received after this date will be kept on file for any future responses.

There were 334 sites put forward within the borough. This equates to 6 times more sites than are currently required.

Maidstone Borough Council (MBC)
Call for Sites (Contd)

MBC are in discussion with infrastructure providers and it is unlikely that any conclusions will be published before the end of the year. MBC will also be lobbying the Ministry of Housing, Communities and Local Government concerning the method of calculating housing numbers in the National Planning Policy Framework.

Marden Neighbourhood Plan Referendum

Thursday 27th February

Marden Memorial Hall

Maidstone Borough Council (MBC) is holding a referendum on the Marden Neighbourhood Plan (MNP) on Thursday 27th February at Marden Memorial Hall. Notice of Referendum can be found on the Parish Council's website and noticeboards. You should have received Polling Cards if you are a Marden resident and all you need to do is answer "yes" or "no". A formal decision will then be produced and published by MBC and if it is accepted, then MBC will use the Neighbourhood Plan to help form its future planning decisions in Marden.

To view the plan, please go to website:
<http://bit.ly/MNPDNov19>

There is also a hard copy of the plan to view in Marden Library or the Parish Office. Please also see the FAQ flyer included in this newsletter.



Section 106 Developer Contributions

The Council continues to lobby our County Councillor and Borough Councillors on S106 contributions and have expressed their concern that some of the trigger dates are close and to ensure all the S106 monies are spent in accordance with the legal agreements. You can find the latest KCC and MBC S106 documentation on the Parish Council website:
<http://bit.ly/S106Contributions>

Infrastructure Spend Plan (ISP) and Community Infrastructure Levy (CIL)

A consultation exercise was undertaken over the Christmas period regarding the creation of a spending plan and thank you to everyone who was able to respond. We have decided to extend the consultation until 31st March 2020 to allow more residents to comment. The purpose of the plan is to identify the infrastructure and investment needed by the parish. It is essentially a 'wish list' of projects which would improve Marden. If you would still like to respond you can view the documents in the library or on our website. You can find the draft document on the link: <http://bit.ly/ISPandCIL>



SPRING CLEAN UP - WE NEED YOU! **SATURDAY 21ST MARCH**

Councillors are calling for volunteers to help with the village clean up on the morning of Saturday 21st March. You will be provided with a picker and bags and are covered by the Parish Council's insurance. Please contact Ali for further details to register your interest either by email:

clerk@mardenkent-pc.gov.uk or call 01622 832305. It's a great community event working together to keep our lovely Parish of Marden tidy. Once again, can we thank those wonderful residents who regularly litter pick around the village - you are stars!



PARISH COUNCIL FINANCES

Councillors have undertaken a thorough review of the parish finances and we are delighted to announce that we do not need to increase the amount of money collected from residents to be spent in Marden in the next financial year from April 2020.

The Parish Council always strives to be prudent and diligent with our finances. The Precept is collected by Maidstone Borough Council (MBC) on behalf of the Parish as part of the Council Tax and we will make every effort to maintain the existing level of service as well as staying on a sustainable financial footing. This means that a Band D taxpayer will remain at £74.57 per annum or £6.21 per month.

Last year to help reduce costs, we decided to decrease the number of newsletters per year from four to three. We will now reduce costs further by editing the newsletter in-house rather than out-sourcing.

You can find the Parish Council Financial details and a plethora of other information on our Website, including all Parish Council minutes etc. Check out:

<http://bit.ly/MPCWebsite>

COMMUNICATIONS



Serving the community and engaging with residents are two of the Parish Council's main objectives. Local councils are at the very heart of their communities giving neighbourhoods a voice and making sure people are more involved in making the decisions that affect them. Councillors are committed to communicating effectively with you and know how important it is for us all to work together.

Councillors always strive to keep residents informed and are looking at ways to communicate our message out to you. We now have a Communications Sub-Committee to ensure we are covering all angles and have a Social Media Policy which you can see on our website. As reported in the Autumn Newsletter, the responses from the 'Feedback Survey' undertaken last year have been analysed and the results were displayed at the Parish Council Open Days last November. However, the Council is always interested to receive your ideas about what information should be included in the Newsletter and on the Council's Facebook page. Also, if you have any suggestions on how we can get information out to residents please let Rachel know. Don't forget to follow us:

On our Facebook page:
@MardenParishCouncil



Follow our Twitter feed on:
@mardenkentpc



Follow our Instagram on:
mardenparishcouncil



Please give us a "Like" or "Follow" us and see the frequent and informative posts.



HIGHWAYS AND PUBLIC TRANSPORT

Highways Improvement Plan and Action Plan

The Council is collating a proactive action list of highway actions for the Parish, including the highway improvements due to be delivered by developers. This was submitted to Kent Highways in January. The plan includes the suggestions made by residents and will be updated annually. You can find this extensive document on our Website: <http://bit.ly/MPCHIP>

Please note, the plan is for highway improvements and not highway maintenance, and you should continue to report any maintenance issues such as street light faults, potholes, drainage, traffic light faults, overgrown vegetation (including hedges and grass) to: <https://www.kent.gov.uk/roads-and-travel/report-a-problem>. If you spot a problem that needs urgent attention, please ring Kent Highways on 03000 418181.

Accident Spots

Accident spots are not always reported if they are non-injury. Councillors encourage residents to report accidents where they are not recorded by Kent Police to Ali. Ali will keep a log as evidence and this information can then be added to the Highways Improvement Plan (see above).



Community Speed Watch

Rachel will be organising Speed Watch sessions shortly and will be in contact with those residents who have kindly volunteered. If there are any other residents who have an hour or two to spare, please contact the Parish Office on 01622 832305 or deputyclerk@mardenkent-pc.gov.uk,

Lorry Watch

At the Parish Open Days last November, a few residents signed up to help with a Lorry Watch scheme designed to monitor the type and number of vehicles passing through the village. Hopefully this project will soon be up and running, but if there are any other residents who can help, please contact the Parish Office on 01622 832305 or deputyclerk@mardenkent-pc.gov.uk.



Marden Primary School – Safe Journey to School Campaign

What a great initiative by parents, teachers and governors who have set up a group to help slow down the traffic on the zebra crossing outside the school at peak times and to encourage sensible driving and no parking on the zig-zag lines.

There have been far too many near misses on the crossing, sometimes caused by thoughtless driving, or by an obscured view of half of the crossing caused by stationary traffic or parking on the zig zags. You may have seen some of the parents and teachers out in hi-vis waistcoats and noticed that the “School Crossing 20” signs are finally working again. This is making a huge difference and is helping to keep the journey to school safe for everyone.

If you think you can spare half an hour, the group is looking for volunteers for their rota from 8.25am until 8.45am. You will need to wear a high-vis vest and be present at key positions near the crossing outside the school. Once a month or once a week, any support is greatly appreciated and working together you can ensure that our children have a safe and calm atmosphere as they arrive at the school gates.

If you see cars mounting the pavement, blocking the crossing, refusing to move off the zig-zags, or turning around in the school entrance, please take photos or make a note of the vehicle registration numbers and report to the School office. Check out the Facebook page: Safe Journey to School - Marden Primary School.



Speed Indicator Sign (SID)

In the Summer 2019 edition of the Newsletter we mentioned that installation of a mobile SID in Goudhurst Road, Howland Road and Thorn Road was proposed. This is still going ahead. However, Kent Highways are waiting for Redrow to provide the funds for this as per the Planning Legal Agreement for Highwood Green and The Parsonage sites. Once the funds have been received by Kent Highways the SID will be ordered and implemented.

Marden Train Station

The Council is still pressing for a meeting with South Eastern and Network Rail to discuss various issues including S106 money which has been allocated for new bike racks and other facilities at the station. Hopefully, this will happen soon.

OPEN SPACE

Marden Playing Field

At the Parish Open Days in November residents were asked to identify their favoured positioning of the field gym equipment which is due to be installed in the next few months. It will be placed in 2 groups of 3 pieces near the play area so adults can undertake a bit of fitness whilst their children play. Our new rocking horse "Rocky" (pictured) has now been installed and an additional CCTV camera will be fitted on the existing pole next to the changing rooms.



At the Parish Open Days we also asked residents to let us know what we could spend the remaining S106 monies on in the Playing Field (this money can only be utilised at the Playing Field and not at Southons Field, the Cemetery or for any other Parish facility). As a result, a S106 Sub-Committee has been set up. We will update you on progress in the next Newsletter.



Annual Parish Meeting **Tuesday 7th April 2020**

7.30pm - Marden Memorial Hall

This is an ideal opportunity to learn more about the work that has been undertaken over the past year in Marden and to receive reports from village organisations and groups. Councillors are delighted that our guest speakers will be a Director from Medway Housing Trust (MHT) (the housing provider for the Parsonage and Appledown Grange) who will explain how Affordable Housing works. The other speaker will be a representative from the Heart of Kent Hospice who will explain the work of the hospice including 'The Compassionate Neighbour Scheme' and 'Dementia Friendly Community' initiatives. Organisations will shortly be contacted to provide a report from 2019 and these reports will be available at the event and on the Parish Council website following the meeting. Organisations will also be able to address the meeting if they so wish. Tea & coffee is served at 7pm and the meeting will begin at 7.30pm.

POLICE & CRIME UPDATE

Parish/Police Surgeries

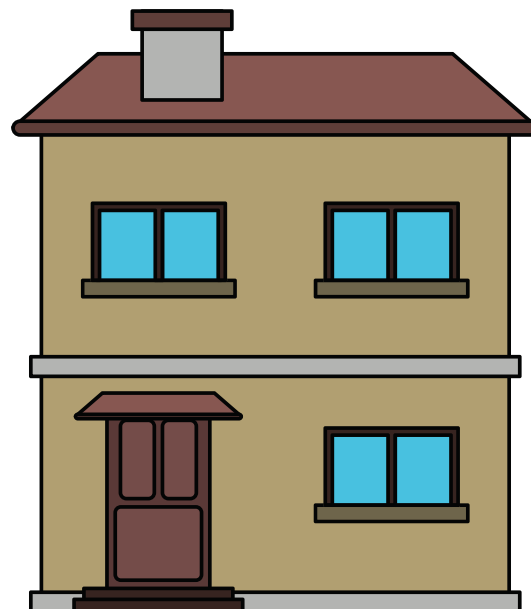
If you have any issues, please pop along to one of the Parish/Police Surgeries to have a chat with the parish PCSO Nicola Morris and Councillors. There are sessions from 12pm-1pm outside the Library on Saturday 21st March, Saturday 18th April and Saturday 16th May.

Maidstone Community Protection Team and Anti-Social Behaviour

The Community Protection team have held several sessions outside the Library in Marden recently for residents to report any anti-social behaviour and other issues they have been experiencing.

There was another spate of anti-social behaviour before Christmas and the Parish Council has been kept up to date by Nicola. A Crime Prevention Officer is aware of the various anti-social behaviour issues including the catapulting incidences and inter-agency meetings have been held to address these problems.

Anti-social behaviour is any behaviour that causes harassment, alarm or distress and affects other people's quality of life.



Neighbourhood Watch

Neighbourhood Watch is a partnership between the police and local communities supported by other partners including KCC Community Wardens and Kent Trading Standards. Its aim is to help people protect themselves and their property, and to reduce the fear of crime and anti-social behaviour. Its benefits include improving the safety of communities, developing community spirit, helping the police detect crime through improved communication and reporting suspicious and criminal activity quickly. It also provides a visible sign that members of a community are looking out for each other. Anyone can belong to a Neighbourhood Watch scheme and play a part in its achievements – a scheme can cover just one street, or part of an estate/development.

For more information go to website:
<http://www.maidstonenhw.co.uk/>

Public Protection Kent Country Eye App



Country Eye Ltd have built a free App for people living and working in the rural community. The app allows users to record and share information on crime, suspicious behaviour and damage in their home, community or whilst out and about. This information is securely stored in a central database and accessed by the voluntary Country Eye team who are fully trained by Kent Police.

Sign up is simple, the app can be downloaded from the Apple App Store and Google Play by searching Country Eye. Please note, the application is not intended for emergency purposes. Users should report to 999 – (crime in progress) 101 – (crime committed) or report to Crime Stoppers if they wish to remain anonymous – 0800 555 111.

YOUTH PROVISION



YMCA Youth Clubs – John Banks Hall (adjacent to Memorial Hall)

Great news – the YMCA West Kent branch has started a:

- **Thursday Youth Club** for ages 11-19 (and up to 25 years SEND) from 5.00pm-7.00pm. At the first session in January, they had a great turnout of 18 so hopefully this will continue to be a success.

- **Thursday Junior Youth Club** for ages 8-11 (and up to 25 years SEND) from 3.00pm-4.30pm. This club is organised in conjunction with Marden Children's Centre.

They get to chill & chat and provide a tuck shop with snacks and toasties. The YMCA aim to enable people to develop their full potential in mind, body and spirit so let's hope it is successful. For more info call: 07927 282129.



HEALTH & WELLBEING

As we all know, Health and Wellbeing is an important part of everyday life and is integral to leading a happy and healthy lifestyle. The Council aims to provide as much information and awareness on services that can help individuals and bring about positive change for local communities. Councillors recently attended a Kent Association of Local Councils (KALC) Health and Wellbeing Conference, which covered a wide range of subjects, including a mental health update from the Kent Police Crime Commissioner and speakers from Heart of Kent Hospice, Public Health at Kent County Council and other Parish Councils.



Monday Friends at Marden

Why not join the wonderful people of Oddfellows who are visiting Marden on Mondays at 11am-12.30pm in the John Banks Hall (adjacent to the Memorial Hall) to make new friends? You can enjoy games, quizzes, group discussions, crafts, pamper sessions (manicure and foot spa) . Members £4 per session and guests £6 and includes refreshments. For more info contact: Lisa-Rae Brough on 07939 323937 or email:

Lisa-Rae.Brough@oddfellows.co.uk

Affordable Counselling Group (ACG)

The village is fortunate enough to have an Affordable Counselling Group at Marden Medical Centre. ACG is an established independent service providing counselling for patients who may not be able to afford the cost of private counselling. They provide discreet appointments in the surgery for patients on short or long-term support, depending on your needs, with a team of fully qualified counsellors. To learn more about how they may be able to help you, please contact Rachel or

Katie on 07780 783638 or email: enquiries@affordablecounsellinggroup.co.uk

Living Memories in Marden - Future dates for March & April at the Vestry Hall 10.30am to 12.30pm:

Tuesday 3rd March - Dementia

Friends with Gail Hall.

Tuesday 17th March - Roarin' 20s Live Band (to be confirmed).

Tuesday 7 April - Easter creativity with Marden Children's Centre.

This group is designed to help those living with memory loss, but everyone is welcome. We pick a theme and expand it with memories, photos, memorabilia, music. If one of our themes interests you, please come along and join us. If you know someone who would benefit - a family member, friend, neighbour, please let them know and bring them along to meet us. Contact Rachel on 01622 831941 or email: livingmemories@mardenchurch.org.uk

This project is supported by Marden Church and Marden Medical Practice.

Allotments and Community Garden

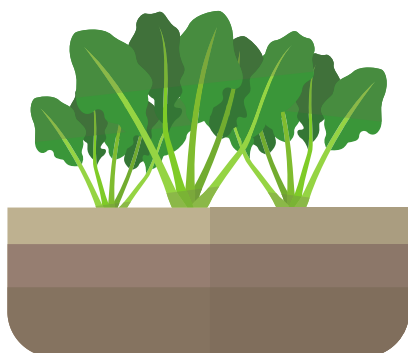
As advised in the last newsletter, the Parish Council has agreed, in principle, to take on the freehold of the allotment area at Highwood Green subject to a satisfactory legal contract with Redrow. A Joint Working Group was held in November with members of the Parish Council, Horticultural Society, Dementia Group and Patients Participation Group, where confirmation was received that there is enough interest for an Allotment Society to be set up.

Allotments and Community Garden (Contd)

There are currently 16 plots on the site, and it is proposed to have 12 allotment plots and 4 converted to a Community Garden. However, we are checking with MBC whether change of planning use is required. If you would like to be added to the list of residents who would like an Allotment, please contact Jill Nichols on 01622 833411 or email her on horsa08@gmail.com. If you previously registered your interest with either the Parish Council or Redrow and you are still interested, please let Jill know.

You can view the allotment site at Highwood Green by taking the path off Goudhurst Road, next to Maple Lodge, and you will find the allotments in Tippen Way.

Cllr Adam and the Parish Clerks recently attended an Allotment Workshop and an Allotment Policy is currently being drafted. The Parish Clerk is also sourcing an appropriate solicitor who deals with Allotment Law. Hopefully the wheels will be set in motion soon.



Community Singing – It's Good for Your Health

Come and Sing

Take along a friend and enjoy traditional and popular songs. Alternate Thursdays in the Congregational Chapel at 2pm followed by refreshments 3-3.30pm.

£1 per session. This group is supported by Marden Medical Centre, Marden PPG, the Parish Church & Congregational Chapel. Please contact Sarah on 01622 832925 or Marden Medical Centre on 01622 831257.

The Village Voices

They are looking for new singers to join their choir – all ages are welcome from 13+. They meet every Monday at the Congregational Chapel. Doors open at 7.45pm and rehearsals start at 8pm-9.30pm. They sing songs from different genres with harmonies and perform throughout the year at various local gigs. First trial lesson is free then £5 for each session. If you're interested in joining, check out their Facebook page [@villagevoicesmarden](https://www.facebook.com/villagevoicesmarden) or email: thevillagevoices@outlook.com

Marden Walking Group

Why not get out in the fresh air and make new friends by joining the group on one of the following walks:

- *7th April @ 10am* - Meet Ian Balmer at Marden Library car park to share cars to Stilebridge to walk beside the River Beult
- *5th May @ 2pm* - Meet Steve McArragher at Marden Library to walk to Marden Meadow when the spring flowers should be out.
- *Wednesday Walks* - Starts again in March
- *Saturday Walks @ 2pm*
- *Sunday Walks @ 10am* - meet at Marden Library
- *Long Distance Walk* - Starts again in April

For more information, telephone Catherine Alderson on 01622 832455 or go to their website:
<http://bit.ly/MardenWG>

Family Miles - Walk, job, run or wheel a mile with your family!

The Family Mile is a totally free, fun activity, where families can come together to do their mile. Whether its walking the dog, pushing the pram, scooting with the kids or simply walking together as a family. Everyone can join in, to move more, with nobody left behind.

If you would like to get involved in the Family Mile, you can sign up via their Facebook page: @themasonmile
Website: www.familymile.com or call 01622 834834.

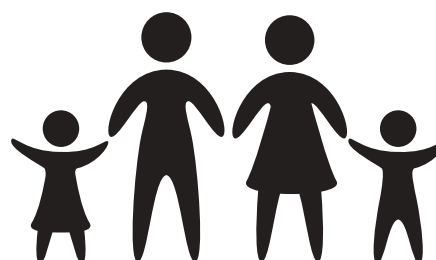
You will receive a welcome email to fill out the "Before Exercise Survey". Once completed, you can track your family miles and be notified of how many Family Miles you have completed. You will receive your free benefits and rewards on completion of set mile goals. Alternatively email: daniel.porter@wellbeingpeople.com to find out where your local Family Mile is running.

Marden Children's Centre

The Children's Centre is part of a nationwide programme of services for 0-25 year olds and their families. Their aim is to offer information, advice and support to parents, as well as integrated childcare and early learning, health services, family support and parental outreach. There are lots of fun activities for you and your children to play, learn and have fun together. For a list of all available services they are currently running, please check out:

<https://www.kent.gov.uk/education-and-children/childcare-and-pre-school/childrens-centres> or email: mardenchildrenscentre@kent.gov.uk or call 01622 831503.

It is so important that it is supported as much as possible.



Maidstone Citizens Advice

Citizens Advice visit Marden on the 3rd Tuesday of each month from 2pm-4pm. The sessions are held in the Old School Room in the Memorial Hall. There is no appointment system you just turn up and you will be seen asap. If you cannot make these sessions, then please call: 01622 752420/757882.

"Coats for Kids"

"Coat for Kids" is a community-based project which offers a free service collection of donated coats that are given to families who need extra support during the Winter season. They accept donations of all children's coats of any age as long as they are in a usable condition. So, if you have any suitable coats to donate, please take them along to Marden Village Club which is their local donation point, or check out their Facebook page or email: coatsforkidstwellsandtonbridge@outlook.com

KCC Information, Advice and Support Kent (IASK)

This is an advice service for Special Educational Needs and Disabilities. This service gives confidential advice to parents and carers of children with special needs and also direct advice to young people up to 25. This service helps and supports people to make informed choices. Marden Medical Centre and Children's Centre have leaflets about the service.

There is also a good support service for young people with Special Needs and Disability to get employment at Kent Support Employment – please contact 03000 410781 if you require more information or check out: <http://bit.ly/KCCSNandD>

DRAINAGE & WATER

Flooding in December

What a long and protracted spell of wet Autumn weather the parish endured. This culminated in pre-Christmas flooding when various roads had to be closed around the Parish together with further storms and power cuts in early January. Yalding and Collier Street parishes are part of a road closure pilot liaising with the Environment Agency, Kent County Council and Maidstone Borough Council when flooding occurs, and we have requested that Marden should be included in this pilot scheme. Whilst the Environment Agency provide flooding/warning alerts, they have no authority to make road closures. This is the responsibility of Kent County Council.



Marden Parish Council will be putting together an Emergency Plan, which will include flood events. If you were impacted by the recent flooding, please let the Parish Council know so that we can effectively plan for future flood events. If you would like to help with the preparation of the emergency plan, please contact the Parish Office.

We would also like to set up a network of flood wardens within the Parish. If you live in an area where flooding occurred, please consider signing up. Contact Ali in the Parish Office for more information.

You can check out flood warning or alerts on:
<http://bit.ly/FloodWarningInfo>

CLIMATE, SUSTAINABILITY & BIODIVERSITY

Air Diffusion Tubes

Councillors have agreed to participate in MBC's 2020 scheme to monitor air quality, and diffusion tubes have now been positioned outside the Primary School and at the junction with Maidstone Road/High Street. The tubes are changed monthly and monitored in the laboratory. The pollutant that is measured is nitrogen dioxide (NO₂) of which the major source is traffic. The average annual mean level of NO₂ is ideally the best measure to give an indication of pollution. .

The volume of traffic is one factor and congestion another – stop/start gives rise to more pollution than free-flowing traffic. Residents will be informed of the result of this ongoing monitoring.

Marden Community EcoHub

The enterprising EcoHub ladies are looking at ways to make Marden as green and sustainable as possible. Their aim is to run frequent events for the community to promote the 6Rs: rethink, refuse, reduce, reuse, repair, recycle. If you have skills or items you would like to share, then please check out the Marden Community EcoHub Facebook page.

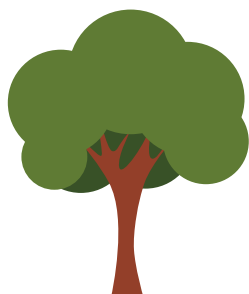
The group has started a Craft Club on the third Thursday of each month from 7.30pm-9.00pm in Marden Village Club. Why not pop along – it's open to all. Just bring along whatever craft project you have on the go. If you haven't got a craft but want to learn, please join them and maybe you will pick something up from another crafty EcoHubber! For more information please email:
vicky_croxford@hotmail.com



Tree Charter

The Council has registered with the Tree Charter and become a Charter Branch. Marden Primary School and Marden in Bloom are also interested in participating in this initiative. If your group would like to be involved in this project please let Cllr Boswell know via email: anne.boswell@ymail.com

The Council's open spaces were "highly commended" in the Kent Men of Trees competition last year.



Wildflower Meadow "Go Green Go Wild"

Marden in Bloom (MinB) is embarking on creating a trial wildflower meadow in Southons Field and planted a few 'plugs' in the Autumn. Wildflower seed patches will be sewn in the Spring when the ground warms up. MinB are liaising with Marden Primary School on the possibility of the children growing wildflower plugs from seed, and if any residents/groups would be interested in growing plugs and helping to plant out, please let anne.boswell@ymail.com know and we can provide you with some seeds.

Marden in Bloom managed to plant over 7000 daffodil bulbs around the village last Autumn and the previous year they planted over 5000. Hopefully the parish will be ablaze with gold this Spring. Next year they hope to organise a Daffodil Trail.

Crisp Packets

You can now recycle your crisp packets in the West End Tavern, Marden Village Club and Marden Primary School.

OTHER PARISH INFORMATION

Parish Council Elections Thursday 7th May



The Parish Council elections will be held on 7th May 2020. If you are interested in becoming a Councillor and feel you have something to offer the village, please contact Alison for more information. You must be a British or Commonwealth citizen, be 18 or over, be on the electoral register for the parish, work within the parish or live within 3km of the parish boundary to stand for election. Information is available on the Parish website:

<http://bit.ly/MPC2020Election>



Meet The Clerks



Ali and Rachel will be out and about on the first Friday of each month from 10.00am to 11.30am on the following dates:

6th March – The Old Post Office
3rd April – Village Café, Vestry Hall
1st May – The Old Post Office
5th June – Village Café, Vestry Hall
3rd July – The Old Post Office

Come along and say hello. Please note the Parish Office will be closed on these mornings.

Kent Association of Local Councils (KALC) Community Awards

In the last newsletter, we asked if you would like to nominate somebody in Marden who has served the Parish for many years and who you feel merits an Award. Thank you for your nominations and Councillors voted at the Full Council meeting in January. The award will be presented at the Annual Parish Council meeting on Tuesday 7th April from 7pm in the Memorial Hall, so if you would like to find out who this will be presented to, please come along (details of the Annual Parish Meeting on page 7).

Summer Play Scheme



This year's Summer Play Scheme will run from Monday 27th July to Friday 7th August and registration forms will be available from the Parish Office, the Parish Council website and the Primary School office from the 1st June. Further information will be available within the couple of months.

Retirement of the Reverend Ali Duguid

The Rev Ali has now retired as vicar of Marden and her last service was on the 9th February. The Council would like to thank her for her ministry in the village and wish her well for a long and happy retirement.

Marden Bowls Club – Short Mat Bowls

Marden Bowls Club is active throughout the year so why not go along to their clubhouse for some friendly fun during the winter

months when their fantastic green is resting. Social games are played on Monday, Tuesday and Thursday afternoons from 2.00pm-4.00pm. All you need is a pair of flat-soled shoes to protect the mats and it's a great way to enjoy good company and gentle exercise. Give Malcolm a call on 01580 892746 or just turn up before 2pm one afternoon.

Marden Skies

Have you checked out the Marden Skies group on Facebook? The photo on the front of this newsletter is taken by Mr Nick Moon. The group showcases residents' photos of our awesome Marden skies. Everybody is welcome to share their photos – no skills are necessary – why not join, get out there and get clicking and posting?

PUBLIC CONSULTATIONS

National Transport and Highways Survey 2019-20 – closes 29 February 2020

Councils across the UK are asking residents to tell them what they think of transport and road services in their area. The National Highway and Transport Network have provided 6 independent surveys. Each survey will only take a few minutes and are asking for views on accessibility, roads maintenance, public transport, road safety, tackling congestion and walking and cycling.

To complete the survey go to this link on their website:

<http://bit.ly/NTHSurvey>

WHAT'S GOING ON IN MARDEN?

As ever in our vibrant community, there were many events over the Christmas period including Marden at Christmas, organised by the Parish Council, which was a great success. A big welcome if you are new to the village, and you can find all the details in the "Welcome Pack" that the Parish Council provides to new residents. There is lots going on this Spring and Summer – here's a flavour of some of the events:

Marden Community EcoHub Event
Saturday 7th March – 10.00am-1.00pm
Vestry Hall

Parish Litter Pick – Saturday 21st March
from 9.30am - See info on Page 4.

Antiphony's Grand Silver Concert
Saturday 21st March - from 7.00pm
Marden Parish Church

The concert is celebrating Antiphony's 25th anniversary and will be in support of the Charity of the Month. Please look out for ticket details.

Annual Parish Meeting
Tuesday 7th April at 7.30pm
Marden Memorial Hall

See info on Page 7.

Marden Patient Participation Group AGM
Thursday 23rd April at 7.30pm
Marden Vestry Hall

Find out about Changes in the NHS in Kent and Marden's Children's Centre. All patients of Marden Medical Centre are invited to attend. Put it in your diary and if you can come, email siandburr@hotmail.co.uk to help with numbers for the catering.

Marden Parish Council Elections
Thursday 7th May

See info on Page 15.

VE DAY 75 Weekend
Friday 8th May (Bank Holiday) to
Sunday 10th May

Further details will be available nearer the time on the Parish Council's Facebook page and website.

Marden Celebrates VE Day 2020
Saturday 9th May – 2.00pm-5.00pm
Southons Field

The Parish Council, in conjunction with the Royal British Legion, is organising an event to commemorate the 75th Anniversary of VE Day. The Marden Big Band and Village Voices will be there, other entertainment is being organised including the possibility of a Spitfire flying over Marden during the celebrations and Lindy Hop dancers. If you have anything you would like to exhibit that is WW2 themed or would like a stall, please email Rachel on deputyclerk@mardenkent-pc.gov.uk. Put the date in your diaries and dig out some 40-style outfits to celebrate this very poignant event in our history and watch out for more info coming on our social media soon.

VE DAY

75TH ANNIVERSARY

A SHARED MOMENT OF CELEBRATION

8 - 10 MAY 2020

Marden Motor Show

Saturday 23rd May from 1.00pm-3.30pm
Southons Field

Marden Motor Club invites residents to their Motor Show when they are hoping to have over 100 vintage, classic, supercars and motor cycles on display covering 100 years of motoring. If you have an interesting vehicle which you would like to display please contact Nick Ferguson-Gow or email nickfgow@googlemail.com or phone 01622 832733. Entry is free, but a raffle will be held to help defray the costs of running the event and refreshments will be provided by the West End Tavern.

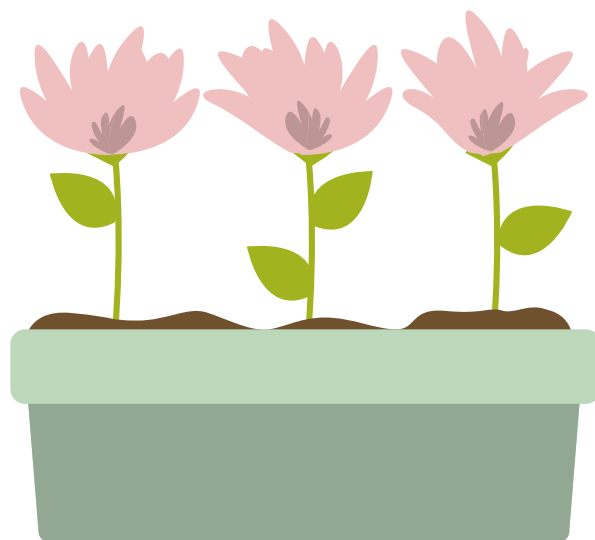
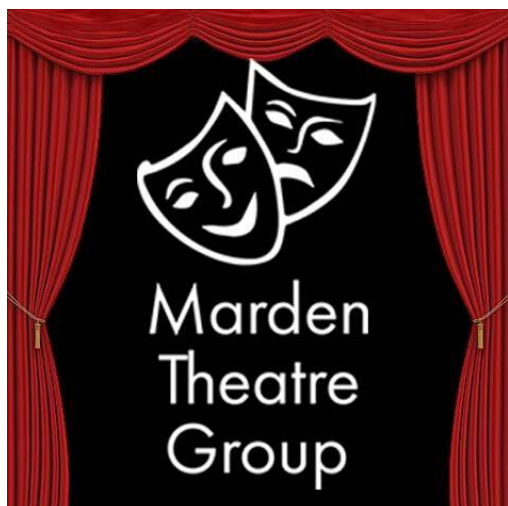
Marden Theatre Group "Waiting For God"
Performances: Thursday 28th May,
Friday 29th May and Saturday 30th May
(including matinee)

Marden Memorial Hall

MTG will have us laughing in our seats this May with their next production of Waiting For God based on the TV series. Find more up to date information on their Facebook page:

@mardentheatregruop

If you would like to get involved either acting or backstage please email: info@mardentheatregruop.co.uk



Marden in Bloom – Pop Up Plant Sale
Saturday 30th May from 8.00am
Outside One Stop, High Street

To help support Marden in Bloom, please come along to buy some bee-friendly plants for your garden. If any residents can spare an hour or two to help with some of our projects to brighten up the village, please call 01622 833351 or email: anne.boswell@ymail.com

Marden's BIG Musical Picnic
Saturday 4th July from 2.00pm
Southons Field

Once again the Friends of Marden Heritage are organising this wonderful village event. If you would like to have a stall or are able to volunteer your time and help, please contact Lucie Green on green427@btinternet.com. For up to date information go to their Facebook page: @mardensbigmusicalpicnic



PARISH COUNCIL CONTACT DETAILS AND OTHER USEFUL NUMBERS

CHAIRMAN

Cllr Lesley Mannington
Telephone: 07802 720069
Email: lesley.mannington@btinternet.com

PARISH COUNCILLORS

Cllr Richard Adam
Telephone: 01622 831673
Email: mpc@tn12.uk

Cllr Chris Barker
Telephone: 01622 832305

Cllr Anne Boswell
Telephone: 01622 833351

Cllr Maria Brown
Telephone: 01622 832305

Cllr Mick Jones
Telephone: 01622 832305

Cllr Ian Newton
Telephone: 01622 831832

Cllr Jean Robertson
Telephone: 01622 831331
Mobile: 07950 816370

Cllr Tom Stevens
Telephone: 01622 832305

Cllr Andy Turner
Telephone: 07803 598813

PARISH CLERK

Ali Hooker
Telephone: 01622 832305
Mobile: 07376 287981
Email: clerk@mardenkent-pc.gov.uk

DEPUTY PARISH CLERK

Rachel Gillis-Coates
Telephone: 01622 832305
Mobile: 07940 241333
Email: deputyclerk@mardenkent-pc.gov.uk

VICE CHAIRMAN

Cllr Kate Tippen
Telephone: 01622 832305
Email: kate.tippen1@gmail.com

BOROUGH COUNCILLORS

Cllr David Burton
Telephone: 01622 862595
Mobile: 07590 229910
Email: david.burton@burtons.uk.com

Cllr Annabelle Blackmore
Telephone: 01622 833299
Email: annabelleblackmore@maidstone.gov.uk

Cllr Steve McLoughlin
Telephone: 01622 820551
Email: stevemcloughlin@tiscali.co.uk

COUNTY COUNCILLOR

Eric Hotson
Telephone: 01580 892312
Email: eric.hotson@kent.gov.uk

POLICE COMMUNITY SUPPORT OFFICER

PCSO Nicola Morris
Telephone: 101
Email: nicola.morris@kent.pnn.police.uk

COMMUNITY WARDEN

Mira Martin
Mobile: 07969 584179
Email: mira.martin@kent.gov.uk

BRITISH TRANSPORT POLICE

Freephone: 0800 405040
Text: 61016

FAULT REPORTING

Maidstone Borough Council
(for Flytipping, Abandoned Vehicles, Dog Fouling and Street Cleaning)
Telephone: 01622 602162
Website: www.maidstone.gov.uk/home/do-it-online/report-it

Kent County Council
(for Potholes, other Road Issues, Vegetation and Street Lighting)
Telephone: 08458 247800
Website: www.kent.gov.uk

For regular parish information, updates and events, follow us on:



@MardenParishCouncil



@mardenkentpc



@mardenparishcouncil