

SUMMER 2021

MARDEN PARISH COUNCIL

NEWSLETTER



A LOOK AT THIS ISSUE:

MARDEN SUMMER PLAYScheme 2021 - PAGE 3

LOCAL JOB OPPORTUNITY - PAGE 3

PLANNING UPDATE - PAGES 4-6



WELCOME FROM THE CHAIRMAN OF THE PARISH COUNCIL



KATE TIPPEN

Parish Councillors have once again asked me to chair the Parish Council a role I am privileged to accept. Thank you to those councillors who have stood for another term of office and a very warm welcome to our three new councillors who have joined us – Theresa Gibson, Matt Besant and Matt Burton. They bring with them a wealth of skills and experience which we will find invaluable. I would also like to record my thanks to the three councillors who stood down in May – Maria Brown, Lesley Mannington and Mick Jones their combined knowledge and experience will be much missed but we wish them well for the future.

Also, congratulations to our new Borough Councillor Claudine Russell and County Councillor Lottie Parfitt Reid. Along with our existing Borough Councillors Annabelle Blackmore and David Burton (now Leader of Maidstone Borough Council), we look forward to working together to achieve the best outcomes we can for Marden.

After an unseasonably cold Spring the Summer is now well and truly here with gardens bursting into bloom before our eyes. I hope we can all look forward with confidence to the future and soon put the horrors of the last 18 months behind us.

Warm wishes
Cllr Kate Tippen



CORONAVIRUS UPDATE

Summer is now upon us with the gradual easing of lockdown and a cautious resumption of life as we once knew. Whilst Covid cases are at low levels and with the increasing confidence of vaccinations, we still need to remain sensible, vigilant and keep within the guidelines especially with the Delta variant and the possibility of other variants emerging.

As pubs, restaurants, gyms and events are now open again it is vitally important that people continue to take a test twice a week, even if you have been vaccinated, just to check whether or not you are unwittingly carrying the virus. One in three people show no symptoms of COVID-19 and regular testing will ensure we put a stop to the spread of the virus.

It is wonderful now to see friends and family socially and do most of the things we once took for granted. It has been tough for so many, but hopefully we can now put this behind us.



GENERAL UPDATE

Welcome to Parish Councillors

The elections took place on 6th May, but Marden Parish Council (MPC) was returned uncontested as only nine candidates stood. MPC comprises of 11 Councillors and eight previous Parish Councillors re-stood (Cllrs Richard Adam, Chris Barker, Anne Boswell, Ian Newton, Jean Robertson, Tom Stevens, Kate Tippen and Andy Turner) with one new Councillor Theresa Gibson. This meant two positions were vacant and Matt Besant and Matt Burton were co-opted at the Full Council meeting on 8th June to make our numbers complete. Welcome to our new Councillors and we look forward to working with you on our team. It is sad to say goodbye to our ex-Chairman Lesley Mannington, our long-standing Councillor Maria Brown who served for 25 years and Mick Jones. We wish our outgoing County Councillor Eric Hotson all the best and thank him for his long-standing help and service over the past few years.

Annual Parish Meeting (APM)

The APM took place virtually on 13th April where reports from the ex-Chairman of the Parish Council, Amenities, Planning, Marden Neighbourhood Plan and Transport were presented, as well as reports from Maidstone Borough Council, Kent County Council, PCSO Nicola Morris and other village organisations. You can view all the reports on the Parish Council Website: <https://bit.ly/MPCAnnualParishMtgs>

Parish Council Meetings

Parish Councils are no longer permitted to hold virtual formal meetings and are now legally bound to hold them face-to-face. Marden Parish Council's meetings are currently being held in the John Banks Hall, Goudhurst Road. Unfortunately, this now limits the number of members of the public able to attend due to social distancing within the hall. If you wish to attend a meeting, please let the Clerk know (Full Council, Planning, Finance or HR) or the Deputy Clerk know (Amenities) prior to the meeting so that you can be booked in. Once the maximum number is reached, unfortunately no member of the public will be allowed access. This procedure will, of course, be reviewed once restrictions are relaxed.

Parish Council e-Newsletter – Weekly Village Round Up

Have you signed up for the Parish Council e-newsletter yet? Every Friday afternoon the “Weekly Village Round Up” lands in your inbox full of local news, information and updates. If you would like to receive this, you can fill in your details at: <https://bit.ly/MPC-E-NewsletterSignUp> or use the QR code on your mobile phone.



Marden Parish Council Job Advertisement

Part-Time Administrative Assistant

Our busy Parish Council office now needs an Administrative Assistant to help our Parish Clerks with day-to-day administration.

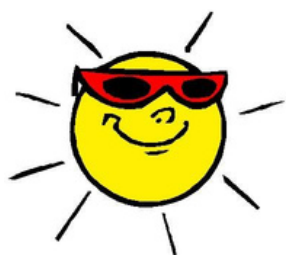
- Minimum of 5 hours per week (could increase to 10 if work dictates)
- 1 day per week (Thursdays) – office-based
- Hourly rate is £9.65
- Pension Scheme is available

The post holder will assist and work under the direction of the Parish Clerk and Deputy Parish Clerk. As well as being friendly, enthusiastic and confident, we are looking for someone who:

- Is proficient with the use of email, Microsoft Word and Excel.
- Is an accurate record keeper, well organised and able to meet deadlines.
- Is able to manage manual and computer records and filing systems.
- Is able to work on own initiative.
- Will undertake other duties as may be reasonably required.

Please contact Ali Hooker, via phone or email if you would like to know more about the Parish Council, the position or would like an application pack. An application pack can also be downloaded from <https://bit.ly/MPCVacancy>. The closing date for return of applications is 5pm on 30th July with interviews to be held between 9th and 13th August 2021. Start date: 6th September 2021.

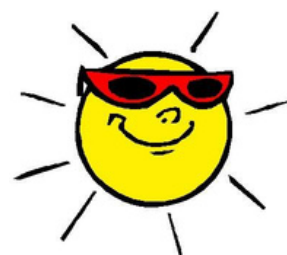
Ali Hooker, Clerk to Marden Parish Council, Parish Office,
Goudhurst Road, Marden Kent TN12 9JX
01622 832305 / 07376 287981 / clerk@mardenkent-pc.gov.uk



MARDEN SUMMER PLAY SCHEME

MONDAY 26TH JULY TO

FRIDAY 6TH AUGUST 2021



Because restrictions are being lifted, we are delighted to announce that the Parish Council will be able to run the Summer Play Scheme this year from Monday 26th July to Friday 6th August from 9.30am to 3.30pm. Marden Primary Academy have agreed it can be run at the school this year. The scheme is for 5–12-year-olds (please note that your child must have reached the age of 5 by 1st September 2020 and will include Year 7 children). This year's theme is "Mad Scientist" and Jordan Manley has once again kindly agreed to be the Scheme Manager. Registration forms are now available from the Parish and School Offices or from: <https://bit.ly/MPCSummerPlayscheme>. If you would like your child/children to attend, but are experiencing financial difficulties, please do not hesitate to speak with Alison on a confidential basis.

*Marden Parish Council
Open Morning
Saturday 25th September
10.00am-12 noon
Marden Memorial Hall*

The Parish Council would like to invite all those amazing volunteers to say a big "thank you" for all the hard work you have done to help get us through the awful pandemic.

We would like to invite residents to meet Parish Councillors to ask any questions you may have raised at the Annual Parish meeting.

We are holding a Public Consultation on the Parish Council's draft "Infrastructure Spend Plan" document. This important Parish "Wish List" has been based on residents' preferences made at the Consultation in November 2019. Go to <https://bit.ly/MPC-ISP> for more information.

We also hope to present the KALC Annual Community Award to a resident who has shown outstanding service in the community during the pandemic. This award is sponsored by the Kent Association of Local Councils, KCC and the High Sheriff of Kent.

Watch out for more information on this event over the coming weeks.

PLANNING UPDATE

You can find the annual Planning report on the Parish Council website which was presented at the Annual Parish Meeting on the 13th April:
<https://bit.ly/MPCAnnualParishMtgs>

Maidstone Borough Council (MBC) Local Plan Review – Regulation 19

MBC believe they are on target with the Local Plan, and it was hoped that the Regulation 19 Consultation would be held in June, but because of the logistics of having an election and bringing new Borough Councillors on board, this is likely to be delayed to September, this will be confirmed after MBC's July meeting of the Strategic Planning and Infrastructure Committee.

MBC's public consultation on Regulation 18b about its approach to the Local Plan Review closed on the 8th January and over 3,000 responses were received. Marden Parish Council (MPC) compiled an extensive response with the assistance of residents. Whilst site 309 – Garden Community North of Marden was not included in the Preferred Approaches Consultation it did include site 295 – Land North of Copper Lane (74 dwellings) and site 314 – Land East of Albion Road (39 dwellings). MPC responded in extensive detail on both these sites explaining their unsuitability. You can find all the Parish Council's responses to the Local Plan consultations on:
<https://bit.ly/MBCLocalPlanReview>

Land North of Marden

As stated above, whilst this site was submitted at the Call for Sites of Maidstone Borough Council's (MBC) Local Plan Review at Regulation 18b in December 2020, it was not included in the Garden Community option in MBC's Preferred Approaches consultation.

It was disheartening in April to receive an application made to MBC for an Environmental Impact Assessment (EIA) Scoping Opinion for a proposed development of up to 2,000 dwellings, in addition to a care home, new primary school, nursery, retail and employment provision, together with associated community facilities, open space and infrastructure improvements including improvements to Marden train station on land north of Marden. (To clarify, a scoping opinion is determining the extent of issues to be considered in the assessment and reported in the Environmental Statement. The applicant is asking the local planning authority – in this instance MBC – for its opinion on what information needs to be included.)

Cllrs discussed this Scoping Opinion at their meetings on 20th April and 18th May and a robust response was submitted to MBC on 19th May detailing once again the unsuitability and unsustainability such a proposal in our unique Wealden village would have in the Parish, along with our extensive submission at Regulation 18. There is a dedicated section on the Marden

Parish Council Website under "Land North of Marden" where you can find all the documentation which will be updated regularly when we receive more information on this proposed site: <https://bit.ly/MPCLandNorthofMarden>

Reed Court Farm

This planning application is for the erection of a new free-range egg farm consisting of 3 hen houses with extensive outdoor ranges and fencing, formal vehicle access from Hunton Road and associated parking, landscaping, woodland and tree planting, drainage and other associated works. This is a complex application with numerous material planning considerations already raised by local residents and statutory consultees. When this planning application was first discussed, the Parish Council submitted a robust response and recommended additional information be provided.

It was discussed again at the Marden Parish Council Planning Meeting on 20th April after further information was received on the application, but many questions remain unanswered and the previous queries raised by Councillors did not appear to have been substantially addressed. Therefore, Councillors recommended refusal and their previous comments were resubmitted to Maidstone Borough Council. The "We Love Chainhurst" representatives also attended the meeting who continue to object to this application. You can find MPC's response at: <https://bit.ly/MPCPlanning>

Housing Targets for Local Authorities

To address widespread concerns about further Government increases in housing targets for Local Authorities across the South East, our MP Helen Grant organised for a group of Kent MPs to write to the Secretary for Housing to express their collective concern with the proposed new housing formula and led a delegation of Kent MPs to meet with the Housing Minister to press the issue further. Partly as a result of their efforts and of MBC's concerns, the Government have now revised their formula which has lowered the number of new houses that must be built in the Garden of England going forward.

PROJECT UPDATE

Marden Emergency Plan

As advised in the Spring Newsletter, Marden Parish Council is drafting a Parish Emergency Plan to be used in the event of an emergency affecting our community such as widespread flooding, heavy snow or severe storm damage, where the arrival of the emergency services and other responders could be delayed, or when essential utilities and highways access may be compromised.



We thank all those residents who have already expressed an interest in taking part and a meeting has been set up on Saturday 31st July at 10am.

Confirmation of whether this will be face to face or virtual will be made nearer the time. If you are interested, and have not put your name forward, please let Ali know.

Assets of Community Value (ACV)

As previously explained, there is an ACV Steering Group who have been investigating Marden's potential Assets of Community Value which forms part of the Community Right to Bid. This allows communities to nominate buildings or other assets whose main use or purpose is the furthering of social well-being or social interests of the local community.

A nomination form has now been submitted to Maidstone Borough Council (MBC) for the Unicorn Public House and the current tenants are fully aware of this. We are awaiting a decision from MBC to see if we have been successful. Further meetings are being planned where other possible nominations will be discussed. Residents are very welcome to attend the ACV Steering Group meetings so please let Ali know if you are interested in taking part.

Parish Road Names, Signs and Finger Posts

The Parish Council is in the process of undertaking a Parish road name and sign audit to submit to MBC as some of the road names and street signs need attention. We have set aside a budget this year to start to undertake the work on the Parish Finger Posts and will update you in the Autumn Newsletter.

HIGHWAYS & PUBLIC TRANSPORT

South East Water Main Renewal in Goudhurst Road – Road Closure - 19th July to 3rd/4th September

The old water main along a 470m section of Goudhurst Road, starting from the junction with Plain Road and working towards the village centre, will be replaced during the school summer holidays. The new main will improve flows in the village as well as reducing disruptions from burst water mains. From 19th July - for up to two weeks - the junction of Plain Road and Sheephurst Lane will not be passable for vehicles. Once this junction is complete, it will be reopened but no vehicles will have access to the village along Goudhurst Road until early September.

To maintain the essential bus services in the village during this period of time, the buses will need to turn around in the village as they will be unable to access Goudhurst Road. The only feasible place for the buses to turn is in the Library Car Park. To do this safely, some of the parking bays in the car park will need to be suspended for the duration of the water main works (up to 11 spaces) and suspension signs will be placed around the bays that will be closed. Advance Warning signs should be in place 2/3 weeks before the closure. Diversions for all vehicles will be set up and access to all properties will be maintained throughout the works.

Clancy, working for South East Water, have a dedicated Customer Service Manager for the scheme to take any questions or issues relating to the works and the road closure, both before the works starts and during, so please call Steve Anthony on 07926 535414 if you have any queries/issues.

We understand both the duration of the road closure and reduction of car parking spaces will be an issue, but the water main renewal is an essential upgrade and there is no alternative to the closing of the bays in the car park.

One.network

This useful tool reports on traffic restrictions and roadworks in Kent. The dates and times may vary but the Parish Council aim to keep residents updated by posting on Facebook and via the weekly-e-newsletter from the notifications received from one.network. Check out: <https://one.network/>

Parish Council Highways Improvement Plan (HIP) Update

The Parish Council held a meeting with Kent Highways in April to run through the Parish Council's HIP. We requested desktop surveys be undertaken and preliminary designs/estimates for pedestrian islands at the junctions of Pattenden Lane/Church Green and Albion Road/High Street and expressed concerns about Howland Road. You can find the HIP document on: <http://bit.ly/MPCHIP2021>

Outstanding Highways Conditions from Planning Approvals – What Developers Have Done/Still To Do

The Parish Council has collated a list of all the Highways Conditions from Planning Approvals at the large developments. Some of the conditions are outstanding and the list has been forwarded to Kent Highways for an update.



Lorries in Howland Road

A number of residents have raised their concerns to the Parish Council over damage to both properties and vehicles caused by HGV's driving along the narrow part of Howland Road (High Street end). There are often up to 50 lorries per day passing and many of the vehicles being construction traffic for the Russet Grove development.

Whilst the responsibility lies with Kent Highways and Maidstone Borough Council as the planning authority, the Parish Council are driving the issue to try to come to a satisfactory solution. A meeting is being organised with our new County Councillor Lottie Parfitt-Reid, Kent Highways, Parish Councillors and residents to meet on site to see if there is any way of resolving the problem.

However, it will need to be evidence-based such as recording of vibrations and lorry movements, weight and vehicle restrictions and asking the opinion of a Conservation Officer at MBC as some of the buildings are listed.

The Parish Council will also be arranging a meeting with Countryside, the developers at Russet Grove, to discuss timescales of when they think the site will be finished.

Speed Indicator Device (SID)

As reported in the Spring newsletter, the posts for the SID device have been installed in the three agreed locations in Howland Road, Goudhurst Road and Thorn Road which should help deter speeding along these roads. The SID is hoped to be installed late July and will be in situ at each location for a period of 1-3 months and then moved by Marden Parish Council.

Community Speed Watch & Lorry Watch

The Parish Council is aware of the large amount of speeding that goes on in the village and now restrictions have been eased, we are making it a priority to get Speed Watch up and running as soon as we can. Several residents have already kindly volunteered to help with these projects, but if there are any other residents who have an hour or two to spare, please email Rachel: deputyclerk@mardenkent-pc.gov.uk or call 01622 832305.

Marden Gateway Signs

A Gateway sign is being considered for installation in Thorn Road. The Parish Council is currently discussing the location with Kent Highways and it is hoped that this should be installed in the next few months. We are also hoping that one will be positioned on entry to the village in Goudhurst Road which was one of Redrow's Highways conditions.

OPEN SPACE

You can find the annual Amenities report regarding our open spaces on the Parish Council Website which was presented at the Annual Parish Meeting on the 13th April:
<https://bit.ly/MPCAnnualParishMtgs>



Southons Field

A new picnic bench has been installed and anchored and the other five benches will shortly be in position. A set of bay swings has also been fitted to enhance the area by the Play Trail and so many children have been enjoying swinging under the canopy of beautiful trees. Many families and children visit the field regularly as it is a safe haven for them to run around, kick a ball etc.

There is also a box of Community Games available for families/village groups for use in the field and please contact Ali or Rachel if you would like to borrow them. The Wildflower Meadow is currently in full bloom so please go and check it out.

During the Summer/early Autumn, the field is open 7am-8pm and is dog-free (apart from guide dogs). Whilst there is a litter bin at the field, we also ask residents to please taken their rubbish home with them. We would also ask if you could kindly respect the privacy of residents who live adjacent to the field, there should be NO access to the woods which are private. Both residents and village groups are welcome to hire the field and please contact the Clerks at the Parish Office.



Marden Playing Field

We all know the benefits of keeping fit and healthy and we're excited to report that the Adult Gym has finally been installed in the Playing Field which is positioned close to the play area. So why not give it a go whilst you're out and about on your walk or when the children play in the play area? Each piece of equipment has instructions on how to use it safely. New benches and bins are currently on order and we are awaiting delivery.

Unfortunately, anti-social behaviour has been reported at the play area/Rookery Court and the Parish Council is investigating the possibility of installing infra-red/sensor lighting which would assist with the CCTV night recording. We are also looking at placing a CCTV camera at Cranham Square.



A totally inappropriate football match took place at the playing field during HRH the Duke of Edinburgh's funeral without the knowledge of the Parish Council. Not surprisingly a number of residents complained and an apology has been received from Marden Minors Football Club:

"On behalf of Marden Minors Football Club, I would like to send a heart-felt apology for allowing our game to go ahead during the Duke of Edinburgh's funeral. Whilst the game is overseen by the FA, the match was in fact part of a friendly mini league formed by member clubs. Our club, our opponents and our match officials failed to account for the residents' thoughts which we apologise for. Other games in the mini league also went ahead with other member clubs as most teams play on private pitches not council pitches with surrounding residents.

We were deeply saddened by the passing of the Duke of Edinburgh, both individually and as a club, and we did observe a minute's silence before this match and all our other games over that weekend and whilst this doesn't make up for our failure to stop this match being played at the time, it does show that as a club we paid our respects.

Again, I can only apologise and moving forward we will liaise closely with the parish and our individual teams and managers to ensure situations like this never arise again. We are a family club with an FA charter standard for our Youth section and last year we were one of the first 100 clubs in the whole of England to become an official Kick It Out Grassroots Equality Chartered club football club. We aim to offer football to all ages and abilities within the village and as a result we want to be an integral part of the village community, not an annoyance and again our full apologies to all who were affected by the club's misjudgement on this issue."

Yours in sport

Chris Price

Marden Minors FC Chairman

Marden Cemetery

There are four areas in our beautiful and well-kept Cemetery – the older parts Sections 1 & 2 where headstones and kerbstones were permitted and Section 3 (which opened in 1993) where only headstones were permitted but families are given permission to tend the plots to a maximum of 2'6" x 6'. There is also a Cremated Remains section which includes a children's area.



As the burial plots are full in the older areas, Section 4 is now in use. This area is divided into four sections for burials, children's graves and cremated remains. Each section is divided by rose hedging which was planted a couple of years ago and is now taking shape, with a central bed tended by a couple of Councillors. Only headstones are permitted in the new burial areas and, for ease of maintenance (it takes our Cemetery Caretaker an inordinate amount of time to trim and maintain around burial areas), tended, fenced, or the placing of other items on plots are not permitted.

Can we please request that residents consider using more sustainable flower tributes and endeavour not to leave plastic on graves and on interment of ashes' plots?

POLICE & CRIME UPDATE

Crime Update in Marden

The crime report received from Kent Police (mid-April to mid-May) included: 1 criminal damage (damage caused to a digger), 1 burglary (shed broken into – male arrested – ongoing enquiries), 1 theft (leaf blower and strimmer stolen – CCTV – enquiries ongoing), 1 interference of motor vehicle (nothing stolen), 1 theft of motor vehicle (Ford Transit stolen), 1 theft from motor vehicle (battery stolen) and 1 theft of pedal cycle (CCTV viewed – offender identified – bike returned).

Anti-social behaviour (ASB) is ongoing at Copper Lane and a Community Protection Warning (CPW) has been issued to the owners of the field and being dealt with by Maidstone Borough Council (see separate report below).

Criminal damage and the housing association has served notice and issued warnings to several properties. Four people have been issued with CPWs for ASB, two people have been dealt with for damage caused with catapults and a Community Resolution carried out with victims and offenders.



The recent crime report (mid-May to early June) showed a considerable decrease in anti-social behaviour (2 reports) as a result of the actions taken above. There were four crimes reported including theft of a jet ski, doorstep theft and criminal damage by a catapult. There was a shocking incident at Marden Railway station where somebody was attacked, and three images have been seen of the attackers on CCTV which is being dealt with by British Transport Police.

The good news is there is a new PCSO task force based in Cranbrook and a bid was submitted and accepted for this team who have been patrolling Marden which is very reassuring for residents.

As you can see from the actions taken above, reporting incidents is so important as it helps to put extra resources into the parish and Kent Police try to collate as much evidence as possible. In an emergency call 999, or if you have any names or information on any crime in the Parish, please call 101. You can also report a crime online: <https://bit.ly/KPReportACrime> or check out the Kent Police Appeals page: <http:bit.ly//KPAppeals>. For Kent Crimestoppers anonymously, dial 0800 555 111 or check out their website: www.crimestoppers.uk.org



Motorbikes off Copper Lane and Howland Road

There have been ongoing concerns from residents living adjacent to a piece of agricultural land in the vicinity of Stone Pit Farm, Howland Road of excessive noise, dust and verbal intimidation caused from motorbikes being used on the field as a track. The surrounding residents have been in contact with the Parish Council on numerous occasions regarding this anti-social behaviour which has been reported to Kent Police, Maidstone Borough Council Enforcement and the Maidstone Borough Council Community Protection Team (noise). As a result, a Community Protection Warning (CPW) has been issued to the owners of the field, but still the anti-social activity continues. A noise abatement case is open and the Enforcement Officer is due to visit the site again, but more evidence is required. An acoustic report is being prepared by an independent company on behalf of the residents and our Borough Councillor, Claudine Russell, is now co-ordinating further proof from residents.

A Public Right of Way (PROW) runs across the piece of land and walkers have turned around when the motorbikes are on site. If you have found this route to be obstructed or suffered intimidation, can we please ask you to report it to KCC as this will build more evidence against the case. Check out: Reporting a Problem on a Public Right of Way: <https://bit.ly/KCCReportPROW>

Action Fraud

Fraud is an increasing crime and is taken very seriously by all law enforcement authorities. Reporting your crime gives the police and other law enforcement authorities vital information to enable them to take positive action against those responsible wherever possible. Fraud is not always investigated by the police and there are circumstances where it is more appropriate for the investigation to be undertaken by another law enforcement agency such as Trading Standards or HM Revenue & Customs (HMRC). Check out www.actionfraud.police.uk or call 0300 123 2040 if you need to report a fraud or cyber-crime. You will receive a reference number and password that is unique to your case. You can also check out: <https://www.getsafeonline.org/>

Kent Police Rural Task Force

The Kent Police Rural Task Force has dedicated officers countywide who work to tackle and prevent crime in the countryside. They help to protect and support Kent's rural communities. Rural crime tends to fall into four categories - agricultural, equine, wildlife and heritage. It can also fall under environmental crime which includes illegal waste dumping, fly tipping, polluting watercourses and land. You can check out more advice and information on: <https://bit.ly/KPRuralCrime>

You can report or discuss any issues relating to rural crime in this area by calling 07580 236308. They also issue a quarterly 'Kent Police Rural Matters' newsletter providing the latest news on rural crime. Check out: <https://bit.ly/KPRuralMatters>

Country Eye App – Helping to Keep the Kent Countryside Safe

There is also a Kent Country Eye app which you can download for free on your android or smartphone - <https://countryeye.co.uk/> Once you've downloaded the app, you snap a photo of any suspicious behaviour, incident or concern, advise where you are or use your phone's built in GPS location, and receive updates and alerts on the incidents you submit. Go on – give it a try to help to keep our lovely Kent countryside safe.



HEALTH & WELLBEING

Health and Wellbeing is such an important part of everyday life and is integral to leading a happy and healthy lifestyle. Building a strong, cohesive and caring community to help support each other is essential and the Parish Council strive to help raise awareness and provide as much information as possible.

Marden Medical Centre Update

The doctors and staff at Marden Medical Centre have never been so busy, which reflects the national picture of GP workload. A recent British Medical Association survey showed that GPs in England had three million more consultations in March this year than in the same month in 2019. This has been caused by a combination of returning to business as usual, Covid infection and vaccination and the significant backlog of work that has built up over the last year.

We are trying to achieve the safest and most efficient balance of telephone and face-to-face appointments, and with Covid still circulating in our community and the threat of new variants, we would like to talk to all patients who need to see a doctor or paramedic before they come to the building. Attending the surgery poses a risk to patients and staff, and every patient that we see takes additional time while we don and doff PPE and clean the rooms after each appointment.

We are grateful for patients help in adapting to the new ways that we are working, using online systems more, and understanding why we have longer waiting times than we would like. Contacting us via the website for administrative queries, using online prescription ordering and online access to check results etc, can be a great help to free up our staff's time to deal with clinical problems.

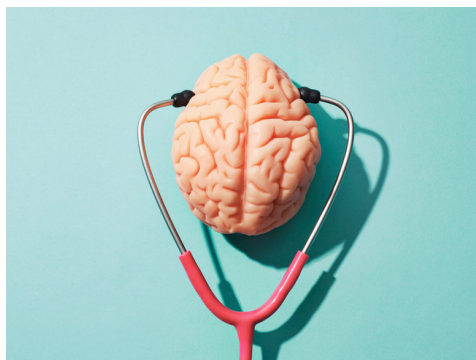
Marden Community Engagement Forum – 'All Working Together'

This newly formed project was the initiative of Dr Julie Morgan and the Patient Participation Group (PPG) to initially identify those Marden Medical Centre patients who cannot access the surgery or other NHS services digitally. It brings together various village groups to work collaboratively for our community and includes Marden Medical Centre, Marden PPG, Marden Parish Council, Marden Parish Church, Marden Pharmacy, Marden Children's Centre, the Marden Community Warden, Marden Dementia Group/Living Memories, Involve Kent Social Prescribing and hopefully a School Family Liaison representative.

As a result of the first meeting, Cllr Anne Boswell and the PPG Chair John Haddow collated a comprehensive list of 'Health & Wellbeing and Key Community Contacts' and the leaflet was distributed to all households in the Spring Parish Newsletter to help signpost residents to the numerous health and wellbeing resources. The list has already proved very useful at Marden Medical Centre and will be updated regularly.



The question of how to facilitate improved digital access for all is complex and the work the Medical Centre supported by the PPG is doing will help identify patients who might want to improve their digital skills. EMPOWERCARE has launched a Digital Ambassador service open to Marden residents who want to improve their digital skills (those 65+ or 50+ with a chronic health condition), offering free digital support which could include loaned devices. Details available from the Marden Medical Centre or the PPG.



Mental Health and Wellbeing – KCC/NHS

All residents should have received a pamphlet through your door about taking care of yourself and your family's minds, as well as your bodies. Apparently 49% of adults said the coronavirus pandemic has impacted negatively on their mental health and wellbeing. It provides a comprehensive list of services for both adults, children and young people. You can visit the Kent and Medway Mental Wellbeing Information hub for services and support at: <https://bit.ly/KentMWInfoHub> or find out more about accessing healthcare services during the pandemic at: <https://bit.ly/KentNHSCoronavirus>



Marden Medical Centre Patient Participation Group (PPG)

PPG acts as a patient voice, representing patient views and experiences, helping the GPs and staff to deliver high quality health care services. The group's aim is to increase awareness of important health related issues in the Marden community. The PPG is free to join, you will receive regular health & wellbeing information by email and receive the bi-annual Newsletter. Formal meetings are held 4 times a year – all Marden Medical Centre patients are welcome to join. For more information on why you should consider joining the Group, please visit our website: <https://www.mardenppg.org.uk/>. You can also follow us on Facebook by searching Marden Medical Centre PPG. You can also email the PPG at: ppg@mardenppg.org.uk.



Involve – Community Wellbeing

Based in Maidstone 'Involve' is a charity with a vision to create 'healthy, connected people and communities'. At Involve they do not believe age is a barrier to good health.

Involve (Contd)

They work to the World Health Organisation definition of health as "a state of complete physical, mental and social well-being and not merely the absence of disease or infirmity." Their range of services include:

Social Prescribing

Looking after peoples' health and happiness through support groups and activities.

Community-navigation

For those over 55 or under 55 and frail and or have complex health conditions. Our Community Navigators can help you to access and understand the services available to you

Carers

For unpaid carers who look after a family member or friend who due to illness, disability, a mental health problem or an addiction cannot cope without support.

Cancer Support

Emotional, practical, and non-statutory advocacy support to people over 55 living in Maidstone and Malling affected by cancer.

Young Adult Carers

They organise training, educational support, days out, emotional support and guidance for young carers aged 16-24.

Childrens' Health and Wellbeing

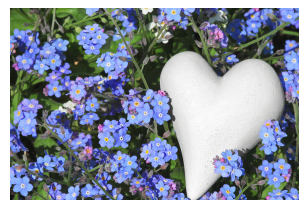
Support for children and young people with mental health, neurodevelopmental and other health conditions, and their families.

Volunteering & Community Services

Enabling the most isolated and socially excluded to connect to their

communities through volunteering. You can find out what is available or if you have any spare time, why not give volunteering a go? Please call 03000 810005 or email office@involvekent.org.uk or check out their website: www.involvekent.org.uk/

Marden Living Memories Café & Dementia Friendly Community



Marden's Living Memories Café and Dementia Friendly Community were given a huge welcome back from the pandemic by the new K20 Cycling Club on Saturday 22nd May. They organised a sportive to raise money for those living with dementia here in our community. Members paid to take part and many villagers made cakes and other goodies to welcome them back from their rides in the Rev Nicky's garden. It was a happy, sociable, heart-warming day and has raised the amazing total of £1,227.40 for dementia. Thank you to K20, thank you to all the bakers and thank you to everyone who supported us. We will be organising another event in July. Please look out for the posters and the Parish Magazine for information. Please email:

livingmemories@mardenchurch.org.uk to be added to our mailing list or phone Rachel on 831941 for more information. We all look forward to meeting you at our next event.

Rachel Chacon

Marden Food Bank Update

Marden Food Bank has been operating for over a year now and we are so grateful to villagers and businesses alike, who have so generously contributed funds and provisions enabling this vital resource to continue. Although much is now up and running and places of work are reopening, there will always be a need for additional support in times of crisis. Therefore, as a church we have decided that the food bank will continue to open every week – to ease financial burden by providing food, to be a place of support and friendship, and to continue to signpost and liaise with other agencies as necessary. Opening times are every Monday 10am – 12noon in the Vestry Hall.



If you feel able to continue your support, please do pop into the Church Office to see Kathy or email office@mardenchurch.org.uk. You can also contact our Treasurer, Mike Davidson on 01622 832538 / treasurer@mardenchurch.org.uk
Kathy Young



Marden Children's Centre

The Children's Centre in Marden remains closed and the KCC Cabinet Member for Integrated Children's Services has explained they hope to return at some point when it is felt safe to do so. KCC Open Access continue to adhere to practices to protect vulnerable children and families.

Please check out the:
<https://bit.ly/KCCYouthServices> page which is a virtual youth offer with a range of activities and sessions available for young children, including: Facebook feeds with themed interactive posts (e.g. mindfulness); Interactive live sessions and quizzes via Facebook or Instagram; one-to-one support using WhatsApp, Facetime etc; group support and sessions via MS Teams and Google Hangouts; virtual sessions including boxing classes, baking tutorials and karaoke; focussed content on Anger Management, Emotional Wellbeing, Self-Esteem etc, links to other resources including activities to get young people active such as PE sessions.

Countryside Code

“Respect, Protect, Enjoy”

If the pandemic has taught us anything, it is how much we value our open spaces and countryside and is a great way to keep healthy and fit. Over the last year it has been wonderful to see so many residents enjoying our public footpaths around the Parish. However, the downside is there has been an increase in trespass on private land. All farmland, including woodland, is privately owned.

Whilst the Public Rights of Way (PROW) are clearly marked, it is quite easy to ‘stray’ off course. You can check out the Kent PROW map at: <https://bit.ly/KCCPROW> and the Marden Wildlife Group are beginning to introduce QR codes on public footpath posts (see their update below).

Can we please ask residents to use the designated PROWs and always make sure your dog does not stray from the path or area where you have right of access? For their safety, always carry a lead. The Countryside Code, in partnership with Natural England, is a guide to enjoying parks, waterways,



coast and countryside and has recently been updated which you can find on the following link:

www.gov.uk/countryside-code

The basic guidelines are:

Respect Everyone – be considerate to those living in, working in and enjoying the countryside; leave gates and property as you find them; do not block access to gateways or driveways when parking; be nice, say hello, share the space; follow local signs and keep to marked paths.

Protect the Environment – take your litter home – leave no trace of your visit; do not light fires or barbecues; always keep dogs under effective control and in sight; dog poo – bag it & bin it – any public waste bin will do or take it home; care for nature, do not cause damage or disturbance.

Enjoy the Outdoors – check your route and local conditions; plan your adventure – know what to expect and what you can do; enjoy your visit, have fun, make a memory.

As already mentioned in the article "Motorbikes off Copper Lane/Howland Road", if you experience any problems on PROW's such as broken stiles, overgrown vegetation or fallen trees, damaged or dangerous path surfaces or damaged/missing signposts, please report it to KCC:

<https://bit.ly/KCCReportPROW> where you will be asked to submit a separate report for each individual problem which helps to identify and inspect the correct location and update you on progress more accurately.



Anyone for Croquet?

Whilst there is a plethora of sporting and health & wellbeing facilities in Marden, we don't have a Croquet Club. You don't have to be naturally athletic to become accomplished at this game, but it's a sport that needs skill, strategy and tactics so good for the old brain! It's a game for both ladies and gentlemen, young or old. So a shout out to see if there is anybody who may be interested in helping to set up a croquet club or would like to join – it doesn't matter if you don't know the rules of the game, it's easy to learn. If so, please phone or message Derek on 07545 289330 or email derek.owens@btinternet.com

DRAINAGE & WATER

Review of Marden Flooding and Surface Water Management Plan (SWMP)

It was reported in the Spring Newsletter that the Parish Council have now documented an extensive review of Marden flooding issues and required actions which logs all the areas where there are problems such as foul and surface water flooding in the Parish. The document was submitted to Kent County Council as leading flood authority and a response was received in May.

KCC has unfortunately not updated the Marden SWMP, and due to lack of resources, they have not been able to review the action points, although they continue to monitor reports of flooding and review their priorities annually. The Parish Council is considering 'next steps' and we will update you in the Autumn Newsletter.

Councillors would like to express their gratitude to Mike Summersgill and Kate & Peter Kershaw who kindly gave their input on this important document. Mike Summersgill has also offered to review the drainage details on Marden's new developments starting with the Parsonage site.

Marden Flood Wardens

The recently trained Flood Wardens actively monitor the flood situation whenever we have heavy rain. If anybody would like to train to become a Flood Warden, please let Rachel know.

CLIMATE, SUSTAINABILITY AND BIODIVERSITY

Autumn Village Litter Pick Saturday 16th October

Finally with the easing of restrictions, the Parish Council is organising a date for an Autumn Spring Clean and Councillors are calling out for volunteers to help.

You will be provided with pickers, bags and gloves and are covered by the Parish Council's insurance. Please contact Ali for further details to register your interest either by email: clerk@mardenkent-pc.gov.uk or call 01622 832305. It's a great community event working together to keep our lovely Parish of Marden tidy. Because of the pandemic we have not been able to organise one for some time, so it's important we get out there and clean up!

The Great British Spring Clean Community Litter Pick was held from 28th May-13th June and information was shared on Facebook and in the weekly e-Newsletter providing information. Residents are always welcome to borrow the Parish Council's equipment and would be covered by our insurance and asked to sign a risk assessment provided you are only litter picking around the pavements and open spaces in the village. Please contact Rachel on 07940 241333 or email: deputyclerk@mardenkent-pc.gov.uk. If you litter pick outside of the village e.g. a country lane, you would have to do this at your own risk and with your own equipment.



On the subject of rubbish, the Parish Council asked Maidstone Borough Council to investigate the possibility of installing a litter bin outside the shops at Church Green as so much litter is left in this area. They have now confirmed they are happy to provide one.

Eco Dog Bag Station

The ever-increasing problem with dog poo on footpaths around the village continues with poo bags being hung on branches or thrown into bushes. Can we please ask that residents be responsible and respect not only our environment but our children – it can be a dangerous health hazard for our children and wildlife.

To help raise awareness of dog fouling within our community, the Parish Council has agreed to install an Eco Dog Bag Station in Marden Playing Field which dispenses free dog waste bags for residents which are 100% compostable.

If you notice any dog poo incidents (including an address), you can report them directly to MBC who can enforce PSPO's by either calling 01622 602202 or complete the online form on the RK9 campaign page: <https://bit.ly/MBCDogFouling>. The RK9 Campaign is about tackling dog fouling in the borough.



Marden Community EcoHub – Recycling Hub

Congratulations to Anna Fisk and the Marden Community Eco Hub group for getting this great initiative up and running in the village. This venture will help to raise money for several charities and assist to reduce landfill. However, its success relies on the area being kept tidy and a box can be found behind the Cherry Tree Chinese Takeaway in Maidstone Road where you can take various items for recycling:

- Egg Cartons (plastic or cardboard) for The Gillingham Street Angels
- Empty Crisp Packets for Crisp Packet Project - St Mary's Island and surrounding areas to make survival blankets. Can crisp packets be empty, clean, flat and not knotted
- Used stamps (not ripped) for Kicks Count, a baby movement awareness campaign Stamp Recycling in aid of Kicks Count
- Drink Can pulls for the Purple Community Fund
- Old bras for Smalls for All a charity sending underwear to African countries

- Domestic Printer ink cartridges for The British Heart Foundation
- Used pens, including highlighters and colouring pens for TerraCycle UK
- Cheese packets including grated packets, blocks and nets for MIND
- Toothbrushes, electric heads, floss containers and toothpaste tubes for Kent Baby Matters

Please put all items in the named container and take any bags home with you. If all containers are full, there is space to leave items in a bag, please let Anna know via the Marden Community EcoHub Facebook page.



EcoHub Freebie Events

Marden Community EcoHub is arranging monthly 'Freebie Events' throughout the summer in response to the huge success of their May event of gifting unwanted items. The idea is simple - people set up a boot fair-style stall in a safe spot outside their homes. On an arranged date, the stalls are plotted out on a map and shared on the Facebook group. It is a lovely way for our community to explore the village and benefit from peoples' generosity in gifting their unwanted items. If you would like to participate in these events, please join the Facebook page - Marden Community Eco Hub.

Roots of Remembrance

The Parish Council has agreed to plant a 'Roots of Remembrance' tree in Southons Field to acknowledge those who have lost their lives in the village to Coronavirus. The Royal Horticultural Society (RHS) are populating a map of the UK displaying all the trees that have been planted as a way of remembering those we have lost throughout the pandemic. If you are planting your own remembrance tree, you can add this to the RHS Roots of Remembrance map:
<https://bit.ly/RHSRoots>



The Parish Council will also be planting a Memorial Tree in Southons Field in memory of HRH The Duke of Edinburgh who sadly passed away in April. We hope to have a special day later in the year for the planting of both trees and the unveiling of memorial plaques, possibly at the Tree Charter Day at the end of November.

Marden Wildlife Group Update

Members have continued observing and recording local wildlife throughout the mixed bag of spring weather, posting notable findings on our Facebook page. Thanks to Warren Muckell at Aumworks, we have launched our own website: www.mardenwildlife.org.uk to publicise the group's work.

It describes the habitats in the parish and the varied (and in some cases, rare) species found here.

An important aspect of what we do is recording what we have. Effective conservation depends on knowing what is here to start with, to protect what we have and to prompt further habitat improvement. How we do this is explained on the site.

Another feature is the introduction of QR codes displayed on public footpath posts. Scanned with a smartphone, they connect to a page on the website explaining what walkers can see at that point. A few are already in position with more on the way.



Marden Wildlife Group (Contd)

The number and distribution of birds and insects stands to increase considerably over the coming two years as local farmers are planning substantial increases in crops planted to benefit birds and insects. Marden Wildlife volunteers will be monitoring the changes, adding what they find to the national databases.

Please check out the Marden Wildlife Facebook page – a place for sharing photos of Marden’s wildlife and everyone is welcome to post their photos, from sparrows to turtle doves or daisies to orchids.

Ray Morris

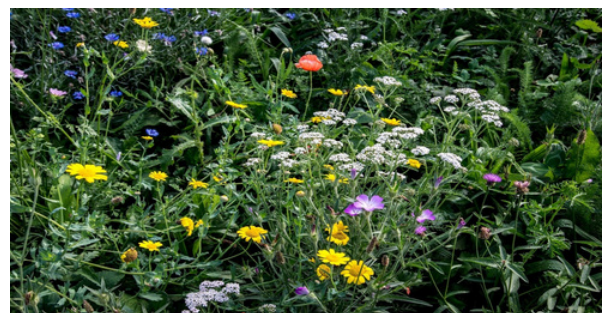


Marden in Bloom

We hope residents enjoyed the wonderful display of daffodils in the Spring and the Wildflower Meadow in Southons Field is now ‘blooming’ – most of the plants attract a variety of wildlife. The planters around the village have been replanted and our gratitude goes to Golden Hill Nursery, Marden Village Club, Marden Parish Council, Peter Hall and Liz Stanley for sponsoring us. If you live adjacent to one, we would be grateful for any drop of water you can give especially during hot and dry conditions.

We continue to work on the beds at the Library area and at the Memorial Hall and have provided Marden School with sunflower seeds for the Early Years children to grow. Our AGM was held on 24th June in the garden of the West End Tavern.

This year’s photo competition is Fungi - tens of thousands of organisms, from mushrooms to mould to yeast - so why not get out there and explore trees, dead wood etc to see what you can find. Please email your JPEG images to: mardeninbloom@outlook.com We always need help with our projects, so if you can spare a little bit of time, please email: anne.boswell@gmail.com
Anne Boswell & the “Blooming” Team



YOUTH PROVISION

The Parish Council has been liaising with KCC to help to try to build Youth provision in Marden again, and the Youth Hub Manager has now secured resources to commence outreach youth work. Initially, their aim is to walk around the village on a Thursday late afternoon and to chat to young people to see what they want out of the Youth Service. Hopefully, a Youth Club will be up and running at some point.

Skate Park

The Parish Council is very aware there is a need within the village for a Skate Park and this idea has been explored several times. The Parish Council is unable to accommodate one in any of their open spaces as they are too close to residents. Until a suitable piece of land can be located within close proximity to the village but away from residents, the Parish Council is unable to take this project forward. However, it has been added to the Infrastructure Spend Plan. If you are a landowner or know of anywhere that would be suitable, please contact Ali the Parish Clerk.

OTHER PARISH INFORMATION

Parish Council Office Reopening

Marden Parish Council is pleased to report that Ali and Rachel have returned to office working as from Monday 21st June 2021. However, they are working following CoVid-19 guidelines and the Parish Office risk assessments so if you wish to visit the office, please go to the front office window to speak to Ali or Rachel. If you wish to discuss something that is confidential, or documents need to be signed, please make an appointment to meet Ali or Rachel indoors when masks should be worn; masks and hand sanitiser can be provided. Please note the front door will remain closed at all times. Office opening times will be the same: Monday, Tuesday and Friday from 10.00am to 12noon.

Report from Claudine Russell Maidstone Borough Councillor

Dear Residents, Firstly I'd like to say a massive "thank you" for electing me to be your ward representative on Maidstone Borough Council. I look forward to working alongside your existing ward councillors Annabelle Blackmore and David Burton, our new KCC Member for Maidstone Rural South, Lottie Parfitt-Reid and of course Marden Parish Council. Hopefully, you already know that I live in the village and please do have a chat with me if you see me in Marden about any issue that concerns you. Telephone reception at the farm is terrible and my job means that I am outside a lot of the time, but please do not hesitate to email me claudinerussell@maidstone.gov.uk about any issue. I look forward to working hard for you all at MBC to make sure that you are represented, and your views are heard.

Marden Library and Heritage Centre

Both the Parish Council and ex-County Councillor Eric Hotson wrote to our MP Helen Grant, the Leader of KCC and the KCC Cabinet Member for Libraries on Marden's concern at the library still not being open. An unsatisfactory response was subsequently received. Our new County Councillor, Lottie Parfitt-Reid, is now lobbying for its reopening stressing the growing need in both Marden and Staplehurst because of the increase in residents. KCC Library services provide e-materials and virtual activities . You can find details at: <https://bit.ly/KCCLibraries>



Community Payback Team

Community Payback directly benefits our local communities as service users carry out unpaid work. Marden Parish Council is now using the Community Payback Team for various projects around Marden on a Sunday and a supervisor oversees the work of service users on projects. The tasks they can undertake are litter picking and ground clearance, building & maintenance, conservation & forestry, charity shop work and painting & decorating.

Some of the projects the Parish Council has lined up for them: rubbing down and repainting the fence around the Napoleon Drive play area, boundary of the car park (with permission from Maidstone Borough Council), Merchant Place pavement, Southons Field next to the Pavilion, Lucks Way Footpath and Lucks Way old play area.

Hedge by the Library - The Parish Council, with the agreement of KCC, requested that the hedging area outside the Library be removed to enable another row of slabs to be installed to make it easier for residents to walk along that area.

The hedge has now been removed by the Community Payback group and rest assured it was thoroughly checked by the supervisor for any nesting birds before undertaking the work. This is a 'work in progress' project as the extensive roots of the hedging will need to be removed by a digger to thoroughly clear the area before the pathway is slabbed and made good. It will be finished with new planting close to the Library building.

Crowdfund Kent

Crowdfund Kent is focused on giving local organisations and groups the opportunity to take forward projects and ideas to improve their local area and benefit the community. Kent County Council (KCC) can pledge up to £20,000 for projects (up to 50% of your campaign target). The first tranche was launched in April and the second round will be announced over the coming weeks. The deadline is likely to be mid-September, so if there are any community groups who have a project such as improving wellbeing, refurbishment of a building, supporting people who are facing financial difficulty, assistance with the Food Bank etc, please check out the Crowdfund Kent website: <https://www.spacehive.com/movement/crowdfund-kent> You will need to get everything ready in terms of knowing costs, permissions etc in place before applying.



NatWest Mobile Van

Great news that the NatWest Mobile Van has recommenced visiting the car park in Marden. They visit every Tuesday from 2pm-3pm, although usually arrive around 1.30pm. Access to the van will continue to be controlled to protect both staff and customers, and for the time being masks will still be worn.

Bonfires

Bonfire smoke can already have a harmful effect on people with health problems such as asthma, chronic obstructive pulmonary disease (COPD), emphysema or bronchitis, so it will also cause significant problems for people suffering with coronavirus symptoms.

If you're thinking of having a bonfire, please don't - Following Government's guidelines residents will need to keep their windows open to get some fresh air, so please spare a thought for those with respiratory problems or coronavirus symptoms.

We need people to think about their neighbours and how they might suffer if you light a bonfire in your garden, even barbecue smoke could create problems for those nearby. During these unprecedented times, please consider your neighbours and avoid bonfires if possible.



It is not an offence to light a garden bonfire. It is however an offence under the Environmental Protection Act 1990 to cause a statutory smoke nuisance. A statutory nuisance happens when smoke causes unreasonable interference with a person's use or enjoyment of their property. Smoke nuisance can occur at any time of the day or night.

For more information and how to report a nuisance bonfire please visit: <https://bit.ly/MCBCBonfires>



WHAT'S GOING ON IN MARDEN?

A big welcome to residents who are new to our lovely village, and we hope you settle in well and become part of our wonderful community. Living in a rural community isn't necessarily quiet and tranquil as you might expect. Marden is a busy and large village – lorries, tractors, fires, fertiliser smells from surrounding farmland, strimming/mowing, motorbikes revving, dogs barking, foxes screaming and owls hooting at night, the thwack of a cricket or hockey ball to name but a few.

Our village has an array of groups/organisations and sporting facilities, and you can find all the details in the "Welcome Pack" on the Parish Council website:
<https://bit.ly/MPCWelcomePack>

Here is a flavour of what some of the village groups are doing now restrictions are easing:



Friends of Marden Heritage (FOMH)

The FOMH raises valuable funds for the Marden Heritage Centre and our lovely parish church. The £18,000 raised during the past four years from our many fund-raising events, along with a grant of £2,500, is being put to good use for the restoration work on the Church windows which commenced at the beginning of April.

Without new members and more people joining the committee, FOMH are currently at risk of not being able to continue as a village organisation which would mean their valuable work holding popular village events like the Big Musical Picnic would not be able to continue either. We hope to run our Musical BBQ at the Vicarage on 19th September but need help and support to do this.

If you are interested in helping at events, becoming a member, joining the Committee, or taking on the position of Chair, please contact Brian on 01622 743011 or brimarchur@aol.com. We would love to hear from you.

From the FOMH Committee

Marden at Christmas Saturday 4th December

Assuming restrictions have been completely lifted, the Parish Council hope to return to the usual format for the Marden at Christmas event starting at The Allens with Carol singing and entertainment, then at the Memorial Hall with Father Christmas in his grotto and a Craft Fayre. If you would like to run a stall at the Craft Fayre, please contact Rachel in the Parish Office. Tables are £10 each.



Marden Bowls Club

Our season is now in full swing but despite the first month played in rather cold and wet conditions, we now look forward to some long-awaited sunshine. Our Open Day on 22nd May attracted fifteen visitors to the green with about ten possible new members. Another Open afternoon was held on Bank Holiday Monday with a further six new visitors to the club. Obviously if there are any more local people wishing to give the game a try, they can contact our Secretary Brian Cooper on 01622 744850.

There are regular Tuesday and Thursday afternoon sessions starting at 2pm, ideal for new bowlers to practice.

Marden History Group & Heritage Centre

The uncertainty about when and if the Library will reopen has been prolonged as has been the lack of an excellent relationship with KCC. Extensive improvements to the library have been made which is somewhat reassuring and we have not had to pay any rent. We have not stopped working on our records and



Sally Sparrow obtained some splendid experiences from villagers during lockdown. A significant addition to our collection came from Anglesey via London and includes records, plans, wills and anecdotes about the houses and the people living in Albion Road during the 1920's. Robin & Barbara Judd are checking the autographs in an album. Mo Gillis-Coates has remade the plaques on PLUTO and the siren with help from Rachel. Thanks to Ian Newton we have received the first addition to our funds since lockdown through a £10 donation for finding and sending a photograph of Norman Thompsett, in the Home Guard, to his daughter Hilary Wheatley. Sadly, Lucia Marsal our Librarian will not be returning to Marden as she has transferred to Tonbridge library and will be greatly missed by everyone.

I am retiring as chair on 20 June but will remain committed to the enterprise and Lesley Mannington (ex-chair of Marden Parish Council) will be my welcome successor.

The Friends of Marden's Heritage are finding it both difficult to maintain membership and even more so to raise funds. The Marden BIG Musical Picnic is the biggest and most popular fundraiser, so please ask around to see if anyone would like to help. We will have to put our thinking caps on to see how we might provide our own funds – all suggestions welcome.

David McFarland

Marden Horticultural Society

It has been an exciting time for Marden Horticultural Society since we launched our new website:

www.mardengardeners.uk As well as details for our members on talks and events, our blogs have proven to be a great success. Provided by members, Marden in Bloom, the Marden Wildlife Group and others, they cover a huge range of topics, tips and information from plant of the month, wildlife and environment, pests and growing tips. Members receive two monthly newsletters by email and non-members can also sign up to receive the newsletters. There is a section for local traders that has received many hits, so if you are a local business, contact us.

We had a successful plant sale in May. Thanks to everybody who grew plants and supported us, and it was wonderful to see so many families who are new to gardening, especially a little boy who insisted on a "cherry tomato and a little long red one, and a cucumber plant". We have had some great Zoom speakers, but there is nothing like personal contact and we hope to be back in the Vestry Hall in July.

Jill Nicholls

Marden Motor Club – Marden Motor Show – Saturday 4th September – 1pm-4pm - Southons Field

On Saturday 4th September, the Marden Motor Club will be holding their re-scheduled annual Motor

Show on Southons Field between 1pm-4pm. The West End Tavern will be running a bar and BBQ and members of the Motor Club will be providing teas/coffees and home-made cakes. The last Show attracted over 100 cars and motorcycles and if you have an interesting vehicle you would like considered for display please contact Nick Ferguson-Gow at nickfgow@googlemail.com with full details of the vehicle concerned.



Marden Parish Church

Over the last few months, it has been lovely to be able to reopen the church doors and resume our services in church on Sundays at 8.00am and 10.30am. To welcome people back to worship in our ancient building and to feel that we are returning to some sort of normality. Despite being back in the building we are maintaining a pattern of online services through our church Facebook page. Yet as we emerge from lockdown, we are entering a new phase in our church's life. We cannot go back to what was done before as times have changed and will continue to change. We pray that there will be new opportunities to reach out and serve the community here in Marden and we hope to resume our community groups and children's work also as restrictions lift. Please do keep a check out our website and Facebook page for details.

Whatever the future holds, please know that you will receive a warm and friendly welcome at Marden church, and we look forward to seeing you over the coming months. Families and children are especially welcome to any of our services and we welcome enquiries about Baptism and Weddings.

Rev Nicky 01622 831379

vicar@mardenchurch.org.uk

Marden Royal British Legion Branch

Our work as one of the Major Service Charities is helping those in need through the Poppy Appeal and other Fundraising events throughout the year. Our local branches are made up of members who have served in the armed forces and others who support our aims, and direct those who need our help and services to our Full Time Case Officers who are fully trained. They are also there to assist and support the Remembrance of all those who gave the final sacrifice in WW1, WW2 and all conflicts since then through to today and beyond to maintain Local Comradeship, Community Support through Branch Meetings and events.



Your Local Branch here in Marden has not been fully active in the last few years due to lack of members and members who would be prepared to take up the Leadership and Committee roles. We are therefore urgently seeking not only new members, but also former members to return and support the work of the British Legion in Marden.

If you are able to assist, please contact Richard Cast on 07787 476879 or email: Kent.Chairman@rbl.community.

Marden Scout Group – Shout Out for Volunteers

Now lockdown restrictions are easing, we are delighted to see all the sections start to resume outdoor face-to-face meetings. Scouting in Marden has always been very popular and for many years we have had to run a waiting list for new member spaces. Managing the waiting list and being able to offer Scouting to all those interested in joining has always been a considerable challenge. We are very much governed by the number of sections we have, the guidelines of recommend sections sizes, the space/practicalities of our HQ & grounds as well as adult volunteers being available to run the sections. In order to help manage the waiting list, in recent years we opened a second Beaver Colony and Cub Pack however as the village grew so did our waiting list!

We currently have approximately 60 young people on our list with the majority interested in joining Beavers.



The Leader Team stepped down in 2020 and subsequent closure of our Jupiter Beaver Colony, this has reduced available spaces. An experienced adult volunteer has come forward to lead the section but until we have more volunteers, we are unable to reopen the section. To find out more information about volunteering, please email gsl@mardenscouts.org.uk
Kieran Burns

Marden Walking Group – Summer Walks 2021

The Parish Council would like to thank Catherine Alderson who has recently stepped down as leader of Marden Walking Group for all her dedication and hard work over the years.

Saturday walks are planned to start soon after May 17th starting from the library at 2pm and are usually between 2-3 miles. The start of the walks on long- distance routes are being considered and details will be published later. These are usually around 8 miles or more, but involve car sharing which under current restrictions are not possible. There are at present no walks planned for July and August as these are holiday months.

A "West End Wander" walk of 6.5 miles is planned for the beginning of September starting at the library at 10am and details will be published nearer the time. Up-to-date details will appear on posters and in the Parish Magazine. For more info, please contact: sianburr@hotmail.co.uk

Thursday Club

Thursday Club is for the over 60's, but most of the current members are older. It is affiliated to the RVS (Royal Voluntary Service) who advise on food and safety standards and annual return of accounts. The club meets fortnightly from 2pm-4pm but hasn't been running during the pandemic. We are hoping to restart soon, so if you would like to join the group to make friends, enjoy a bit of entertainment or even trips that would be great. Help is needed to get it up and running again, so please email Dorothy Reed: dreed129@btinternet.com or call 07710 338601.



Queen's Platinum Jubilee

And finally, looking forward to 2022, it has been announced that there will be a four-day weekend to celebrate the Queen's Platinum Jubilee (2nd-5th June). The Parish Council is in the early stages of discussing a village event on one of these days and if anyone is interested joining our Working Group or has any ideas of how we can celebrate this on Southons Field, please contact Rachel, the Deputy Clerk by email.

Marden Theatre Group

The Committee has been meeting virtually and it is hoped for us to have our first face to face meeting on 30th June.



We have contacted the cast for our future production of "Waiting for God" with a view to start rehearsals soon. Should restrictions allow, we hope to perform the week of October half term.

If you are interested in acting, stage management or anything amateur dramatics then email us on info@mardentheatre.co.uk or find us on Facebook @mardentheatre. *Mo Gillis-Coates*



MTG Rising Stars

The MTG Rising Stars team have been busy bees organising the Summer Drama School from Monday 9th August to 13th August in the Marden Memorial Hall for the children in the village (age between 7 and 15 years old).

The Summer Drama School is where we put on a production in a week! Children are cast their part on the first day and we rehearse each day, learning our lines and where we need to be on stage. Lots of fun to be had with props and costumes!

This year, we have an amazing production called "Wow, What a Year!". Here is what it is about: Where to start? Home-schooling, empty supermarket shelves, social-distancing, bubbles, tiers, facemasks, not being able to hug our grandparents...these have been extraordinary and challenging times! But through it all, heroes have emerged and with a strength of spirit, hope in our hearts and a sense of humour, we are coming out the other side. So, what better way to commemorate our place in history than with a bloomin' good sing-song!

For more information or to book, please email the team on: info@mardentheatre.co.uk
Rachel Gillis-Coates

MARDEN THEATRE GROUP
RISING STARS

SUMMER DRAMA SCHOOL 2021

AT MARDEN MEMORIAL HALL
MONDAY 9TH AUGUST TO
FRIDAY 13TH AUGUST 10AM TO 3PM

CALLING ALL CHILDREN AGE 7 TO 15 YEARS OLD!
LOVE ACTING AND DRAMA?
LOOKING FOR SOMETHING COOL TO DO THIS
SUMMER HOLIDAY FOR A WEEK?

WHY NOT JOIN US FOR A WEEK OF DRAMA,
DEVISING, PERFORMANCE, PROPS, COSTUME,
FUN AND FRIENDSHIPS!

DRAMA TEACHERS FULLY DBS CHECKED AND
FIRST AID TRAINED

THE COST OF THE WEEK IS £85 PER CHILD
WHICH INCLUDES A FREE T-SHIRT!

LIMITED SPACES. FOR FURTHER
INFORMATION OR TO BOOK PLEASE EMAIL
[INFO@MARDENTHEATREGROUP.CO.UK](mailto:info@mardentheatre.co.uk) TO
REQUEST AN APPLICATION FORM.

OUR PRODUCTION ----->

FIND US VIA MARDEN THEATRE GROUP ON FACEBOOK, TWITTER AND INSTAGRAM

PARISH COUNCIL COUNCILLORS, CLERKS AND OTHER USEFUL NUMBERS

CHAIRMAN

Cllr Kate Tippen - 01622 832305
kate.tippen1@gmail.com

VICE CHAIRMAN/PLANNING COMMITTEE

CHAIRMAN

Cllr Andy Turner - 07803 598813

VICE CHAIRMAN PLANNING COMMITTEE

Cllr Richard Adam - 01622 831673
mpc@tn12.uk

CHAIRMAN AMENITIES COMMITTEE

Cllr Anne Boswell - 01622 833351 / 07808 868703

VICE CHAIRMAN AMENITIES COMMITTEE

Cllr Jean Robertson - 01622 831331 / 07950 816370

PARISH COUNCILLORS

Cllr Chris Barker - 01622832305

Cllr Matt Besant - 01622 832305

Cllr Matt Burton - 01622 832305

Cllr Ian Newton - 01622 831832

Cllr Tom Stevens - 01622 832305

Cllr Theresa Gibson - 01622 832305

PARISH CLERK

Ali Hooker
Telephone: 01622 832305
Mobile: 07376 287981
Email: clerk@mardenkent-pc.gov.uk

DEPUTY PARISH CLERK

Rachel Gillis-Coates
Telephone: 01622 832305
Mobile: 07940 241333
Email: deputyclerk@mardenkent-pc.gov.uk

BOROUGH COUNCILLORS

Cllr David Burton - 07590 229910
david.burton@burtons.uk.com

Cllr Annabelle Blackmore - 01622 833299
annabelleblackmore@maidstone.gov.uk

Cllr Claudine Russell
claudinerussell@maidstone.gov.uk

COUNTY COUNCILLOR

Lottie Parfitt-Reid - 07919 360000
lottie.parfittreid@kent.gov.uk

POLICE COMMUNITY SUPPORT OFFICER

Telephone: 101
<https://bit.ly/KPReportACrime>
<https://bit.ly/KPRuralCrime>

COMMUNITY WARDEN

Mira Martin
Mobile: 07969 584179
Email: mira.martin@kent.gov.uk

BRITISH TRANSPORT POLICE

Freephone: 0800 405040
Text: 61016

FAULT REPORTING

Maidstone Borough Council
(for Flytipping, Abandoned Vehicles, Dog Fouling and Street Cleaning)
Telephone: 01622 602162
Website: www.maidstone.gov.uk/home/do-it-online/report-it

Kent County Council
(for Potholes, other Road Issues, Vegetation and Street Lighting)
Telephone: 08458 247800
Website: www.kent.gov.uk

For regular parish information, updates and events, follow us on:



@MardenParishCouncil



@mardenkentpc



@mardenparishcouncil